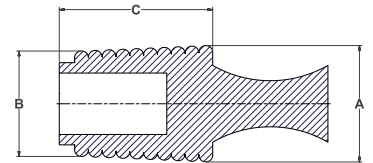


# ULTRABAKE™ FLANGELESS PLUGS 600°F (315°C)

Part Number	Color	Imperial (in)			Quantity Per Bag
		A	B	C	
UFP00250	CLEAR	0.230 5.84	0.157 3.99	1.000 25.40	250
UFP00312	BLACK	0.315 8.00	0.221 5.61	1.000 25.40	250
UFP00406	YELLOW	0.380 9.65	0.315 8.00	1.000 25.40	250
UFP00468	CLEAR	0.470 11.94	0.380 9.65	1.000 25.40	250
UFP00562	LIGHT BLUE	0.575 14.61	0.480 12.19	1.000 25.40	250
UFP00625	PURPLE	0.630 16.00	0.536 13.61	1.000 25.40	250
UFP00718	RUSTY RED	0.709 18.00	0.630 16.00	1.000 25.40	250
UFP00787	LIGHT GREEN	0.787 19.99	0.709 18.00	1.000 25.40	100
UFP00866	GREY	0.866 22.00	0.787 19.00	1.000 25.40	100
UFP00945	CLEAR	0.945 24.00	0.866 22.00	1.000 25.40	100
UFP01024	BLACK	1.024 26.00	0.945 24.00	1.000 25.40	100
UFP01102	DARK GREEN	1.102 28.00	1.024 26.00	1.000 25.40	100
UFP01134	PURPLE	1.147 29.13	1.063 27.00	1.000 25.40	50
UFP01178	LIGHT BLUE	1.181 30.00	1.102 27.99	1.000 25.40	50
UFP01216	RUSTY RED	1.220 31.01	1.142 29.01	1.000 25.40	50
UFP01234	YELLOW	1.256 31.90	1.181 30.00	1.000 25.40	50



- Recommended for Powder Coating, E-Coating, Plating and Anodizing
- Designed to protect threaded holes without masking the surrounding area
- The tapered design and hollow core allow a single plug to be used for different sized holes
- Color coding increases visibility and eases the job of sorting the plugs after use

# E.P.D.M. FLANGELESS PLUGS 300°F (149°C)

Part Number	Imperial (in)			Quantity Per Bag
	A	B	C	
FP00250	0.230 5.84	0.157 3.99	1.000 25.40	250
FP00312	0.315 8.00	0.221 5.61	1.000 25.40	250
FP00406	0.380 9.65	0.315 8.00	1.000 25.40	250
FP00468	0.470 11.94	0.380 9.65	1.000 25.40	250
FP00562	0.575 14.61	0.480 12.19	1.000 25.40	250
FP00625	0.630 16.00	0.536 13.61	1.000 25.40	250
FP00718	0.709 18.00	0.630 16.00	1.000 25.40	250
FP00787	0.787 19.99	0.709 18.00	1.000 25.40	100
FP00866	0.866 22.00	0.787 19.00	1.000 25.40	100
FP00945	0.945 24.00	0.866 22.00	1.000 25.40	100
FP01024	1.024 26.00	0.945 24.00	1.000 25.40	100
FP01102	1.102 28.00	1.024 26.00	1.000 25.40	100

- Recommended for Plating, Anodizing and Spray-Painting
- Tapered design and hollow core allow multiple applications
- Protect threaded holes without masking the surrounding area